



CONSULTING, INC

# TECH CONSTRUCTION PROGRESS

2/6/19



# WORK IN PLACE THROUGH JANUARY

- Exterior bleacher installation continued.
- Concession building electrical continued.
- Exterior light pole installation started.
- Auditorium grading completed.
- Auditorium slabs continued.
- Interior metal stud wall framing in areas 6, 7, and 8 continued.
- Sheet rock and taping in areas 3, 4, kitchen, and area 6 continued.
- Interior stairs and railings were installed in areas 1 & 2 learning neighborhoods.
- Pool install continued.
- Painting continued in areas 2 & 3 learning neighborhoods and gym.
- Tile continued in areas 1 & 3 learning neighborhood, and kitchen.
- Ceiling grid installation started in areas 1, 2, and 3 learning neighborhoods.
- Lighting installation continued in Areas 1 & 2 learning neighborhoods.
- Electrical Finishes were ongoing in areas 1 & 2 learning neighborhoods.
- Carpet install in area 1 has begun.
- Architectural wood paneling and fins have begun in area 1 learning neighborhood.
- Lighting install in the gym and fab lab continued
- Architectural casework continued in Area 1 learning neighborhood.
- Science casework has started in Areas 1, 2, and 3 learning neighborhoods.
- Electrical underground continued in area 7 auditorium.
- Electrical rough-ins were ongoing in areas 4 – 8.
- Ductwork installation continued in areas 1-3 mechanical rooms, area 6 mechanical room/admin area, area 8 locker rooms and auditorium.
- Duct and piping insulation continued in the learning neighborhoods, commons, admin area, and locker rooms.
- Hydronic piping continued throughout the learning neighborhoods, area 4 kitchen and commons, area 6 admin/front entry and area 8 athletics area.
- Interior plumbing rough-ins continued throughout all learning neighborhoods, kitchen, and area 8 locker rooms.
- Exterior metal panels continued throughout areas 4, 7, and 8.
- Window installation continued in areas 3, 4, and 7.
- Granite installation continued at the administration area.
- Fire sprinklers installation continued throughout all learning neighborhoods, commons, kitchen, gymnasium, athletic areas, and auditorium.



# Kitchen Serving Area





# Food Prep Area & Culinary Area



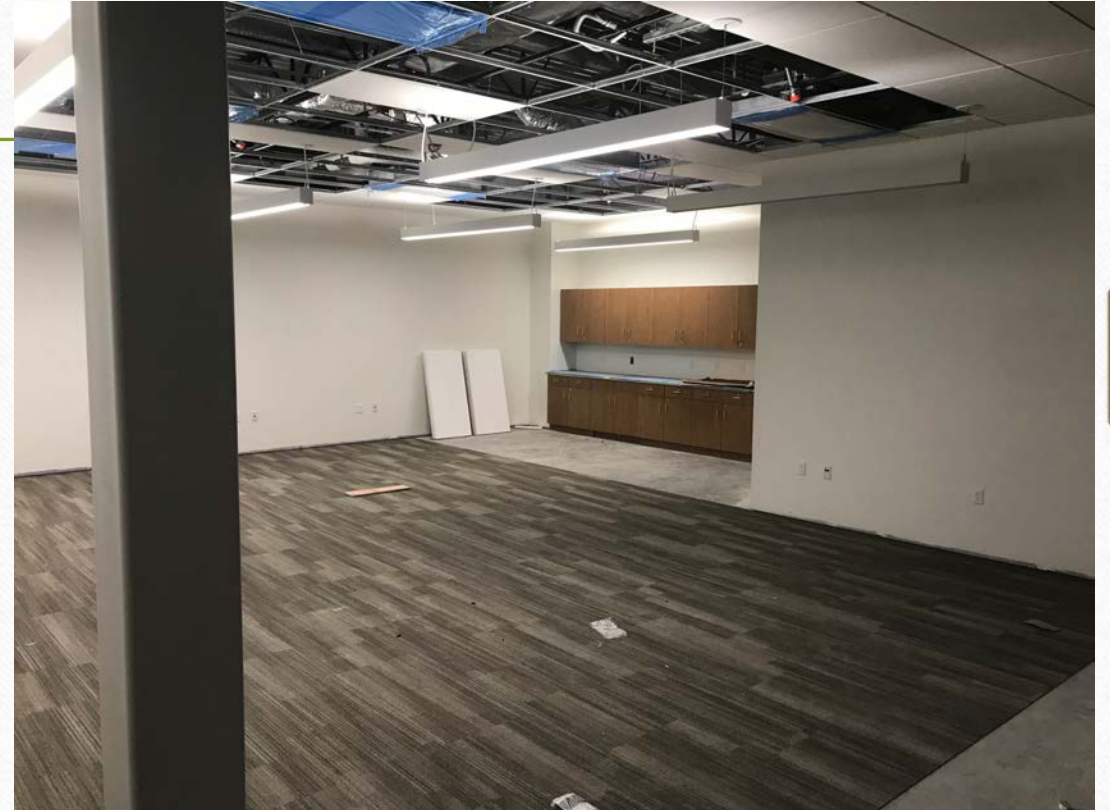


## Area 1 Clear Story & Classroom Area





## Medium Group Room & Staff Collaboration Area



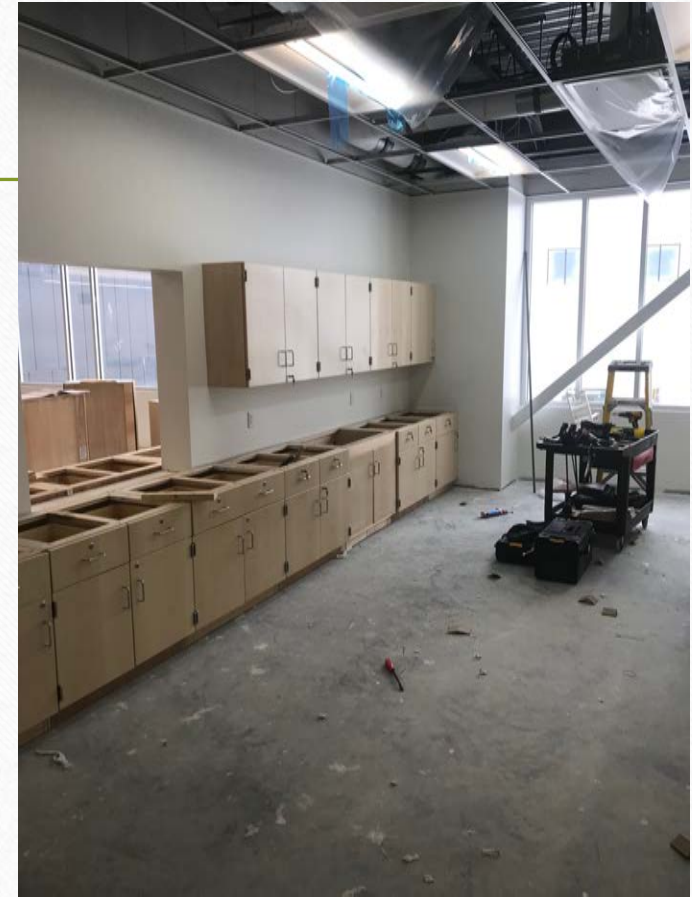


# Area 2 Clear Story & Science Classroom





# Area 3 Clear Story & Science Prep Area





# Pool & Gym



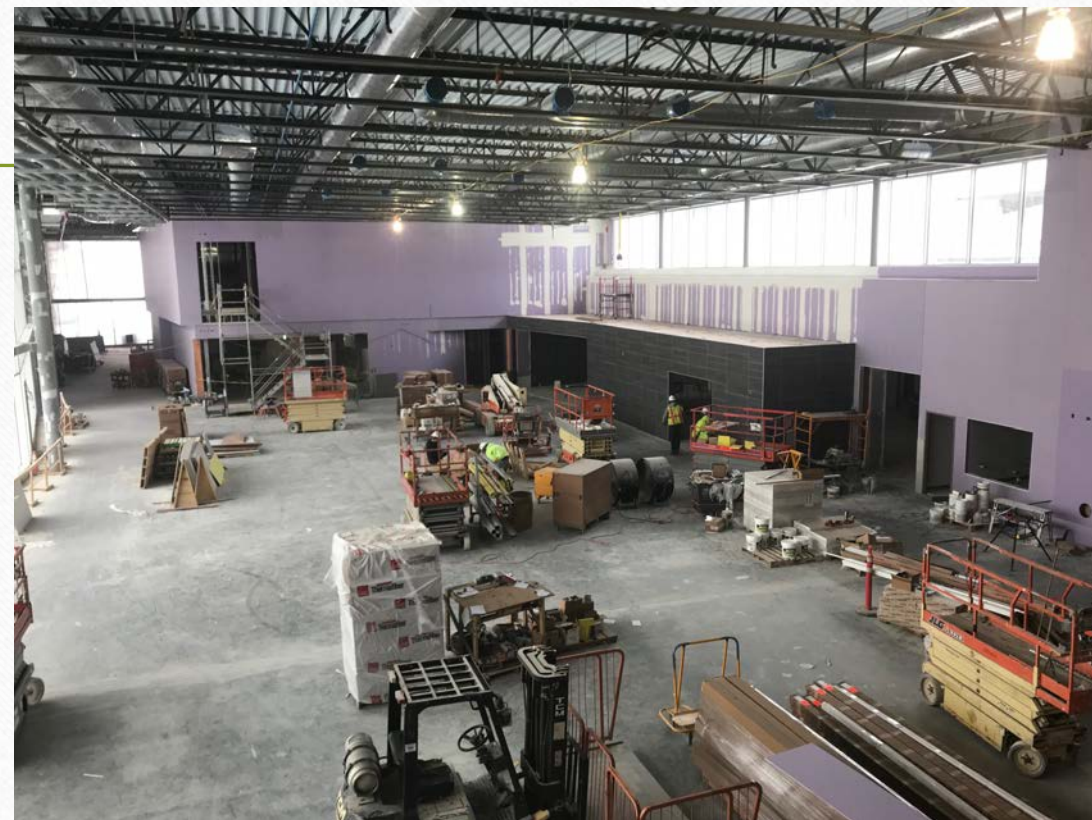
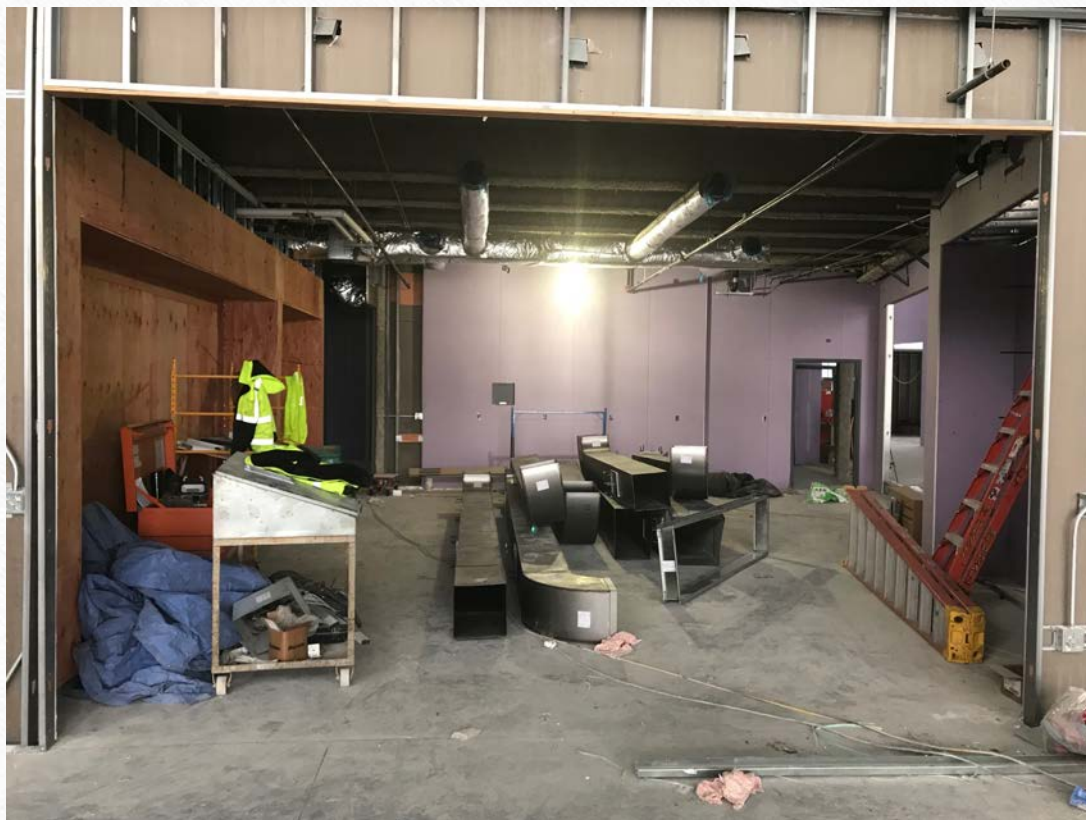


# Front Entry & Admin Area





# Tiger Den & Commons





## Commons Entry & Art Rooms





# Front Entry Granite Install





















# UPCOMING SCHEDULED ACTIVITIES

- Exterior bleacher installation will continue.
- Concession building electrical will continue.
- Exterior light pole installation will continue.
- Auditorium grading will continue.
- Auditorium slabs will continue.
- Interior metal stud wall framing in areas 7 & 8 will continue.
- Sheet rock and taping in areas 4 and area 6 will continue.
- Interior stairs and railings will be installed in areas 3, 4, and 6 learning neighborhoods, fab lab, and admin area.
- Pool install will continue.
- Painting will continue in areas 2 & 3 learning neighborhoods and commons.
- Tile will continue in areas 1 & 3 learning neighborhood, and culinary area.
- Ceiling grid installation will continue in areas 1, 2, and 3 learning neighborhoods.
- Lighting installation will continue in Areas 1, 2, and 3 learning neighborhoods and kitchen.
- Electrical Finishes will continue in areas 1, 2 & 3 learning neighborhoods.
- Carpet install will continue in area 2 & 3 learning neighborhoods.
- Architectural wood paneling and fins will continue in areas 2 & 3 learning neighborhoods.
- Architectural casework continued in Area 1, 2, and 3 learning neighborhoods.
- Science casework will continue in Areas 1, 2, and 3 learning neighborhoods.
- Electrical underground will continue in area 7 auditorium.
- Electrical rough-ins will continue in areas 4 – 8.
- Ductwork installation will continue in areas 1-3 mechanical rooms, area 6 mechanical room/admin area, area 8 locker rooms and auditorium.
- Duct and piping insulation will continue in the learning neighborhoods, commons, admin area, and locker rooms.
- Hydronic piping will continue throughout the learning neighborhoods, area 4 kitchen and commons, area 6 admin/front entry and area 8 athletics area.
- Interior plumbing rough-ins will continue throughout all learning neighborhoods, kitchen, and area 8 locker rooms.
- Exterior metal panels will continue throughout areas 4, 7, and 8.
- Window installation will continue in areas 4, 6 and 8.
- Granite installation will continue at the auditorium.
- Fire sprinklers installation continued throughout all learning neighborhoods, commons, kitchen, gymnasium, athletic areas, and auditorium.



# QUESTIONS

---







**Tech High School Budget Summary**  
**St. Cloud Area School District 742**

**Overall Budget**

<b>1 Funding</b>		<b>\$ 107,499,701</b>
Bond, Bond Premium, Bond Interest, Utility Rebates, North Entry City Reim.		
<b>2. Expenses</b>		
A. Permits, Plan Review Fees, Wetland Credits, Property Purchase, City Assessments	\$ 2,794,581	
B. Fees, Services, HVAC Commissioning, Surveys, Soils Investigations, Construction Testing, Bond Issuance Costs, Insurance, Relocation Costs,	\$ 11,220,149	
C. Completed Construction Contracts and Co-op Purchasing (Includes approved Alternates)	\$ 78,314,506	
D. Remaining Construction Allowances	\$ 10,653,425	
E. Construction Contingency	\$ 4,475,000	
<b>Total Expenses</b>	<b>\$</b>	<b>107,457,661</b>
<b>Balance</b>	<b>\$</b>	<b>42,040</b>





## Tech High School Budget Summary

St. Cloud Area School District 742

### Allowances Summary and Balances

#### D Remaining Construction Allowances

Item	Budget	Contracted	Estimated	Balance
Furniture, Fixtures and Equipment (FFE)	\$ 4,200,000		\$ 3,527,877	\$ 672,123
Technology	\$ 2,925,000		\$ 2,849,341	\$ 75,659
Distributed Antenna System	\$ 600,000			\$ 600,000
Site Maintenance Equipment	\$ 400,000			\$ 400,000
Building Signage	\$ 125,000			\$ 125,000
Interior and Exterior Scoreboards	\$ 538,000	\$ 576,939		\$ (38,939)
Auditorium Equipment	\$ 350,000			\$ 350,000
Site Buildings				
Concessions, Toilets, Electrical	\$ 588,200	\$ 588,200		\$ -
Team Rooms and Maintenance Underground	\$ 279,763	\$ 279,763		\$ -
Remaining for Student Materials/Contractor	\$ 647,462			\$ 647,462
Total Remaining Construction Allowances	\$ 10,653,425			

#### E Construction Contingency

Bid Discrepancies	\$ 500,000	\$ 500,000		\$ -
Construction Contingency	\$ 3,975,000	\$ 2,319,532	\$ 88,926	\$ 1,566,541
Spray Applied Fireproofing			\$ 229,270	\$ 1,337,271